

High Density Residential Growth - Harbour View 7-18-18

Recently Completed

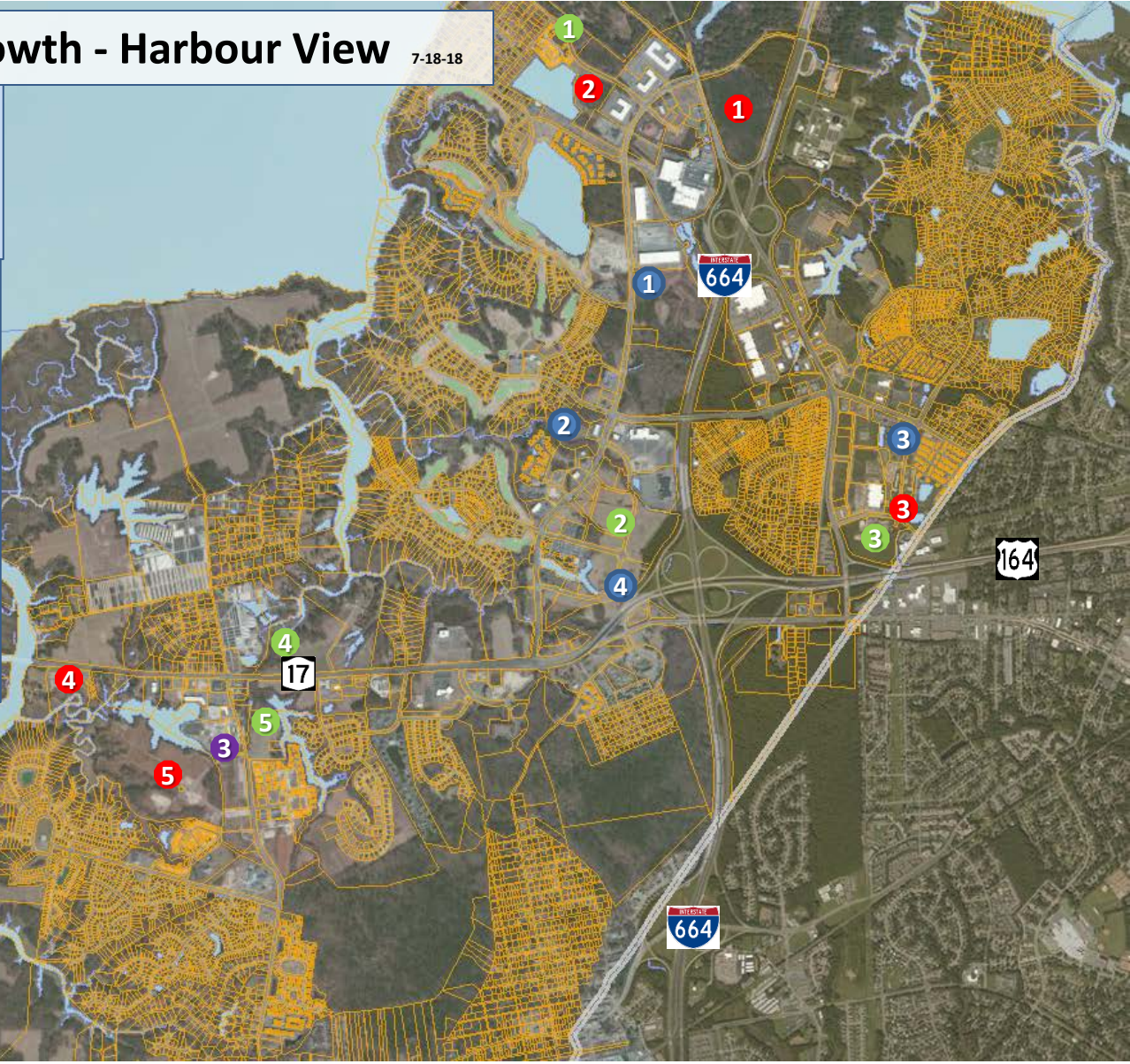
- 1- Bickford Senior (aged care) – 45 units
- 2- The Crossings (aged care) – 174 units
- 3- Hampton Roads Crossing (rental) – 444 units
- 4- Meridian at Harbour View (rental) – 224 units

Under Construction

- 1- Sunfall (sale) – 85 units
- 2- Claremont at Harbour View (rental) – 276 units
- 3- Park 216 (rental) – 250 units
- 4- 3800 Aqua (for rent) – 400 units
- 5- Shoulders Hill (55+) – 147 units

Future Development (zoning in place)

- 1- Pt at HV (sale/rental) – 500 units
- 2- Bridgeway Dr. (sale) – 70 units
- 3- Hampton Roads Crossing (sale) – 100 units
- 4- Rt 17 Apartments (rental) – 125 units
- 5- Bennett's Creek Qtr (sale) – 417 units
- 6- River Club (sale) – 430 units



Harbour View Market Profile, 2017 – 2022 (proj.)

Population:

2017 5 miles: 93,512	10 miles: 346,751	15 miles: 865,271
2022 5 miles: 98,326	10 miles: 357,829	15 miles: 891,665

Source: esri

Housing Units:

2017 5 miles: 34,888	10 miles: 121,945	15 miles: 322,723
2022 5 miles: 36,573	10 miles: 125,916	15 miles: 332,249

Source: esri