

MEDICAL/OFFICE SPACE AVAILABLE

FOR LEASE



RETAIL • HOTEL • OFFICE

GEE'S GROUP PARTNERS
SUFFOLK, VA



RESTAURANTS

GEE'S GROUP PARTNERS
SUFFOLK, VA



TOWNHOMES • APARTMENTS

GEE'S GROUP PARTNERS
SUFFOLK, VA

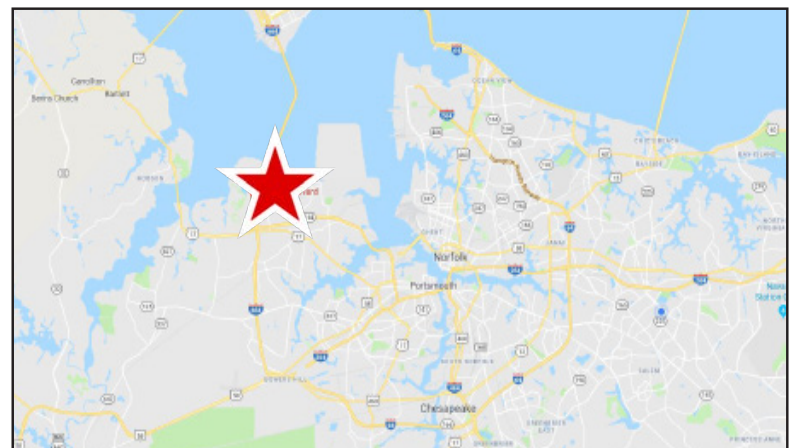


THE POINT AT HARBOUR VIEW | College Drive & Harbour View Boulevard, Suffolk, Virginia

PROPERTY FEATURES:

- The Point is a 55 acre mixed-use development located in the heart of Harbour View in Suffolk. The Point features multiple opportunities to accommodate first-class medical/office tenants:
Option 1: 2 story building, ±30,000 SF (plan attached)
Option 2: multi-story building from ±50,000 up to 78,000 SF (rendering above)
- Lease Terms** ranging from 7-10 years
- Build to suit** opportunities available
- Easy accessibility, excellent visibility** from Interstate I-664
- Neighboring Employers include:** Huntington Ingalls Shipyard (18,000 employees); Department of Defense (1,700 employees); US Navy (1,500 employees); and Sysco Foods (500 employees)

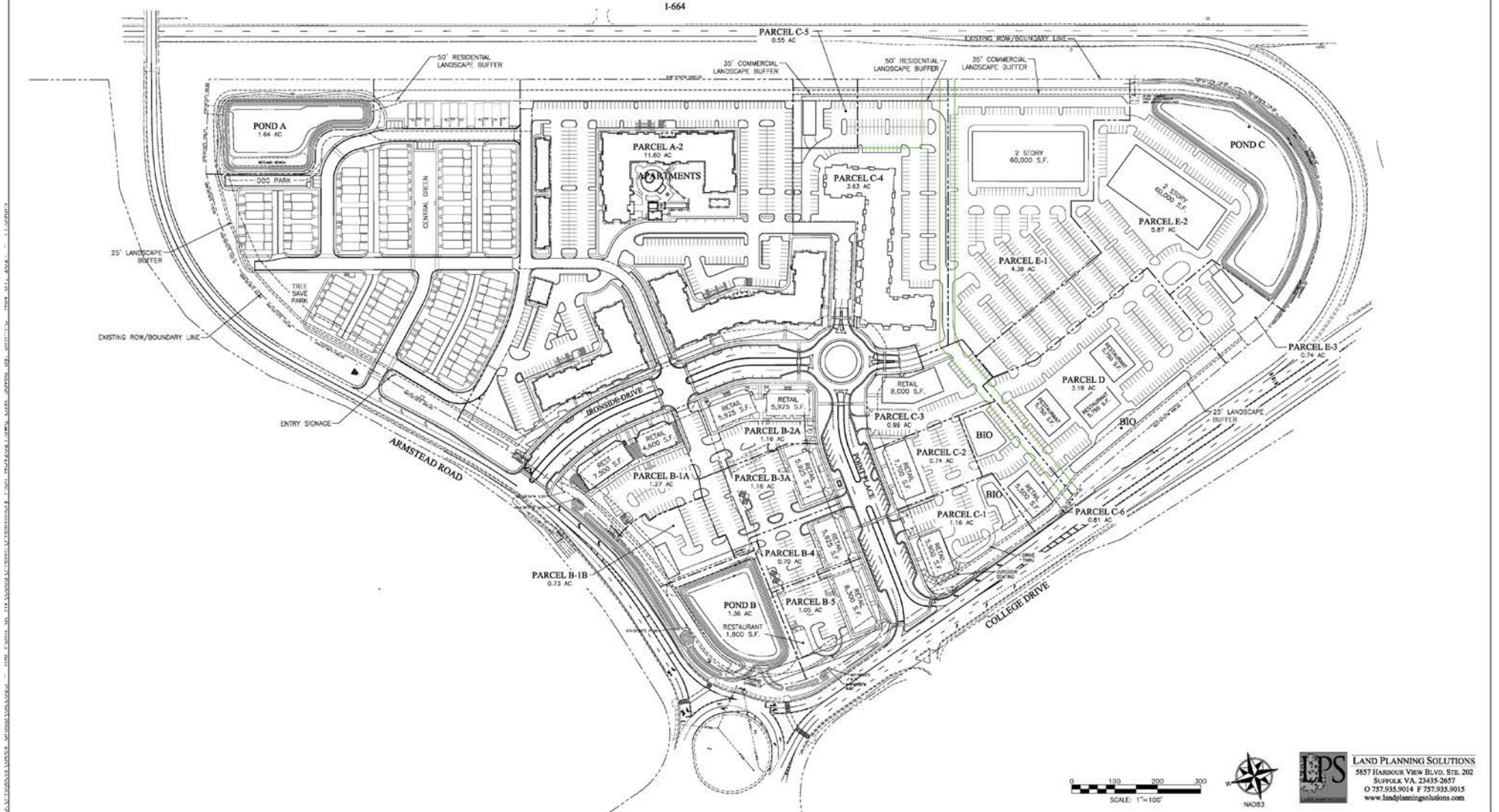
DEMOGRAPHICS	3 MILES	5 MILES	10 MILES
Est. Population	38,579	95,920	291,406
Avg HH Income	\$66,756	\$72,505	\$74,896
Households	15,131	39,431	119,269



Jay Burnell
o: 757.222.0111
m: 757.617.3511
jay@parkerburnell.com

real estate group
Chris Bendit
o: 757.222.0111
m: 757.620.4630
chrisbendit@parkerburnell.com

PRELIMINARY PLAN



THE POINT
AT HARBOURVIEW

RETAIL • HOTEL • OFFICE
GEE'S GROUP PARTNERS
SUFFOLK EDA

THE POINT
AT HARBOURVIEW

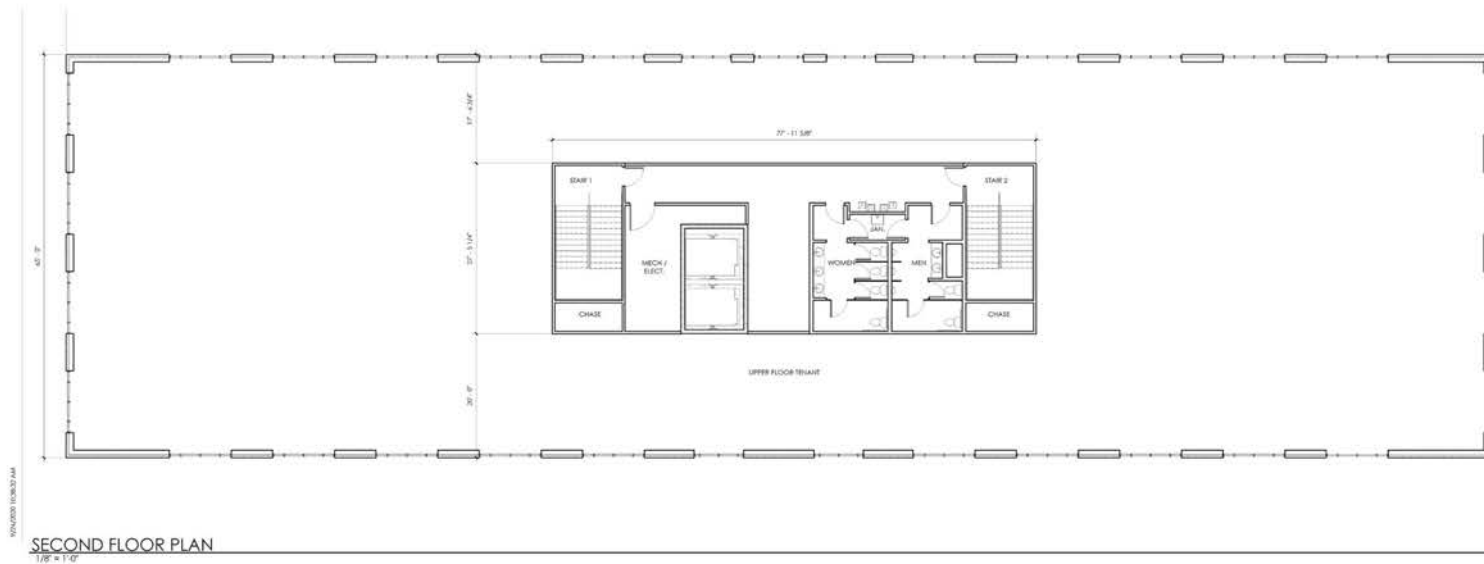
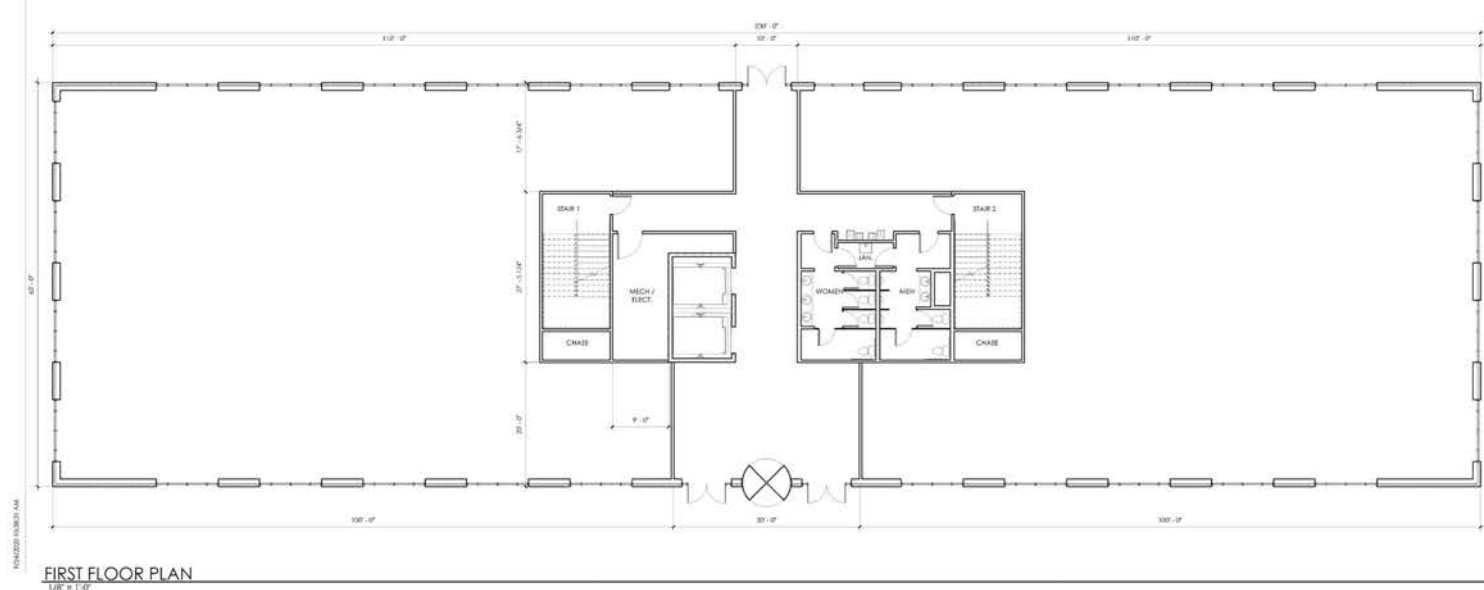
RESTAURANTS
GEE'S GROUP PARTNERS
SUFFOLK EDA

THE POINT
AT HARBOURVIEW

TOWNHOMES • APARTMENTS
GEE'S GROUP PARTNERS
SUFFOLK EDA

THE POINT
AT HARBOURVIEW

OPTION 1 - OFFICE BUILDING



NEW OFFICE BUILDING FOR
GEE'S GROUP REAL ESTATE
DEVELOPMENT



09/24/20

CHA PROJECT 18153
ISSUE DATE 09/24/20
REVISION NO. DATE

SECOND FLOOR PLAN

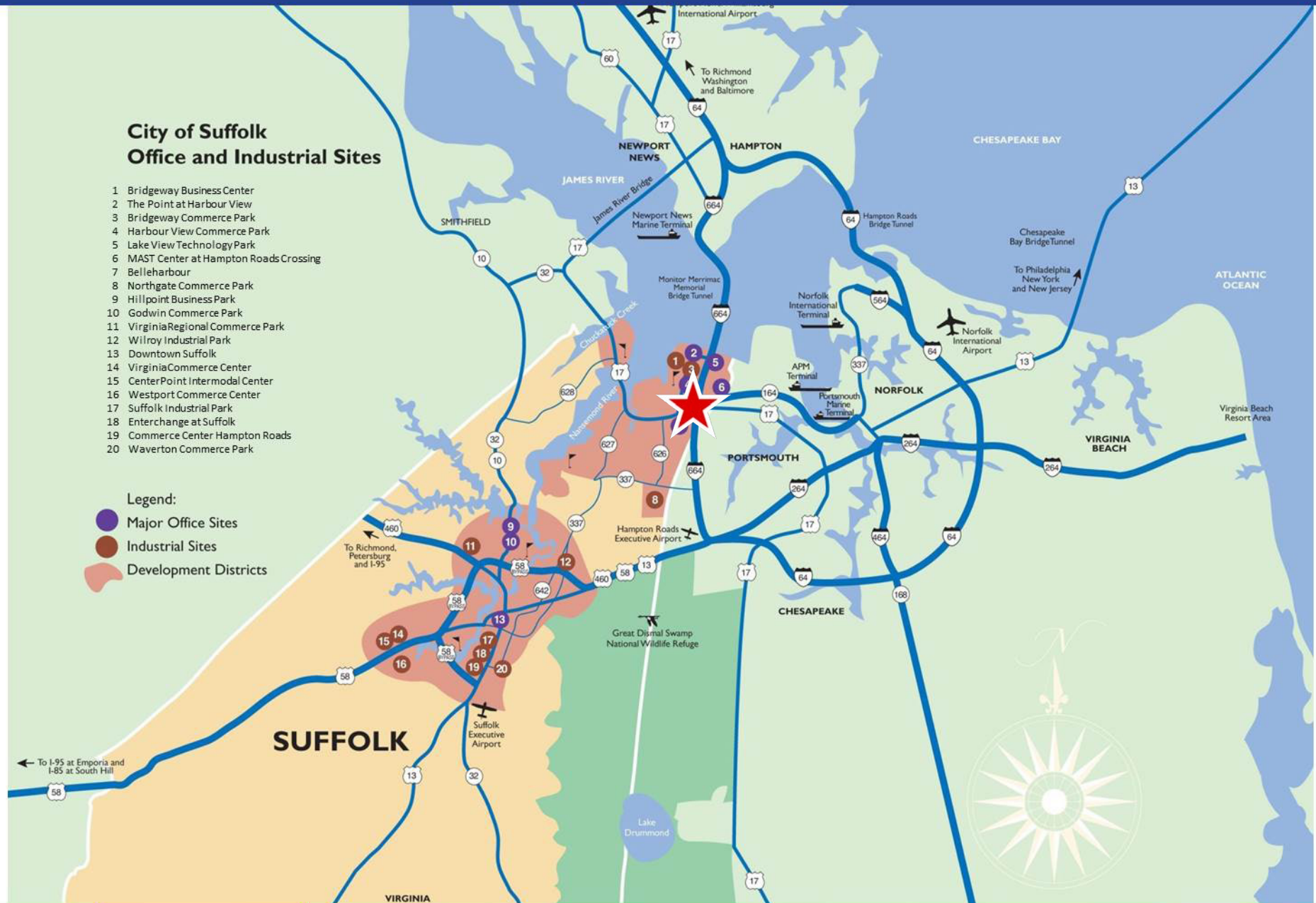
A2.0

City of Suffolk Office and Industrial Sites

- 1 Bridgeway Business Center
- 2 The Point at Harbour View
- 3 Bridgeway Commerce Park
- 4 Harbour View Commerce Park
- 5 Lake View Technology Park
- 6 MAST Center at Hampton Roads Crossing
- 7 Belleharbour
- 8 Northgate Commerce Park
- 9 Hillpoint Business Park
- 10 Godwin Commerce Park
- 11 Virginia Regional Commerce Park
- 12 Wilroy Industrial Park
- 13 Downtown Suffolk
- 14 Virginia Commerce Center
- 15 CenterPoint Intermodal Center
- 16 Westport Commerce Center
- 17 Suffolk Industrial Park
- 18 Enterchange at Suffolk
- 19 Commerce Center Hampton Roads
- 20 Waverton Commerce Park

Legend:

- Major Office Sites
- Industrial Sites
- Development Districts



Suffolk Virginia

